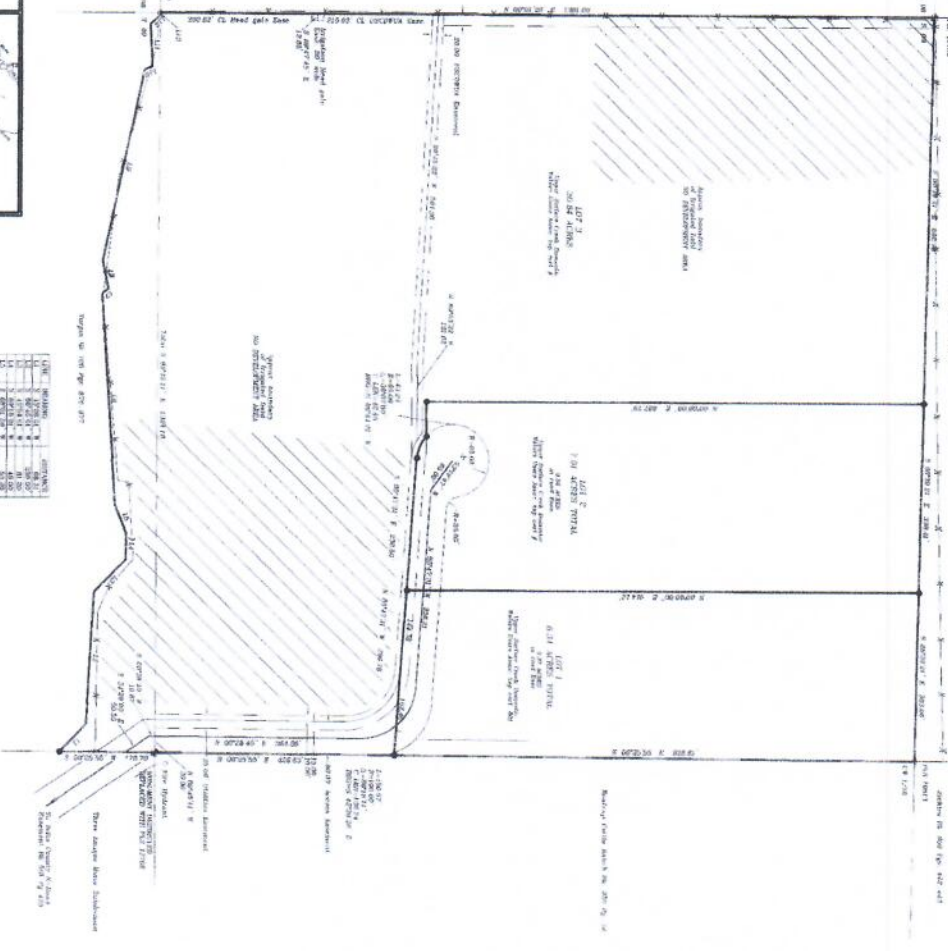


Survey of Township 24 N, Range 93 W, Section 09, Delta County, Colorado

Map No. 24-93-09

MOELAN MINOR SUBDIVISION # 00-076
 WITHIN THE W 1/2 SW 1/4
 SEC. 09 T. 24S. R. 93W. 6TH P.M.
 DELTA COUNTY, COLORADO

1. Subject property is not to be used for other purposes than those shown on the plat.
2. All easements in this survey are subject to the provisions of the Colorado Easement Act, C.R.S. 38-1-101 to 38-1-109.
3. The plat is subject to the provisions of the Colorado Easement Act, C.R.S. 38-1-101 to 38-1-109.
4. The plat is subject to the provisions of the Colorado Easement Act, C.R.S. 38-1-101 to 38-1-109.
5. The plat is subject to the provisions of the Colorado Easement Act, C.R.S. 38-1-101 to 38-1-109.
6. The plat is subject to the provisions of the Colorado Easement Act, C.R.S. 38-1-101 to 38-1-109.
7. The plat is subject to the provisions of the Colorado Easement Act, C.R.S. 38-1-101 to 38-1-109.
8. The plat is subject to the provisions of the Colorado Easement Act, C.R.S. 38-1-101 to 38-1-109.
9. The plat is subject to the provisions of the Colorado Easement Act, C.R.S. 38-1-101 to 38-1-109.
10. The plat is subject to the provisions of the Colorado Easement Act, C.R.S. 38-1-101 to 38-1-109.



TYPICAL Easement

- 1. 10' wide easement for utility
- 2. 10' wide easement for access
- 3. 10' wide easement for utility
- 4. 10' wide easement for access
- 5. 10' wide easement for utility
- 6. 10' wide easement for access
- 7. 10' wide easement for utility
- 8. 10' wide easement for access
- 9. 10' wide easement for utility
- 10. 10' wide easement for access

BASES OF BENCHMARKS

1. 10' wide easement for utility

2. 10' wide easement for access

3. 10' wide easement for utility

4. 10' wide easement for access

5. 10' wide easement for utility

6. 10' wide easement for access

7. 10' wide easement for utility

8. 10' wide easement for access

9. 10' wide easement for utility

10. 10' wide easement for access

SECTION 09

Map showing the location of Section 09 within Township 24 North and Range 93 West.

AREAL LOCATOR

Map showing the location of the survey area within Delta County, Colorado.

CONTROL SURVEY CERTIFICATE

1. A control survey was conducted and found to be correct.

2. The control survey was conducted by the undersigned.

3. The control survey was conducted on the date of the survey.

4. The control survey was conducted in accordance with the provisions of the Colorado Easement Act, C.R.S. 38-1-101 to 38-1-109.

5. The control survey was conducted in accordance with the provisions of the Colorado Easement Act, C.R.S. 38-1-101 to 38-1-109.

6. The control survey was conducted in accordance with the provisions of the Colorado Easement Act, C.R.S. 38-1-101 to 38-1-109.

7. The control survey was conducted in accordance with the provisions of the Colorado Easement Act, C.R.S. 38-1-101 to 38-1-109.

8. The control survey was conducted in accordance with the provisions of the Colorado Easement Act, C.R.S. 38-1-101 to 38-1-109.

9. The control survey was conducted in accordance with the provisions of the Colorado Easement Act, C.R.S. 38-1-101 to 38-1-109.

10. The control survey was conducted in accordance with the provisions of the Colorado Easement Act, C.R.S. 38-1-101 to 38-1-109.

STATEMENT OF INVESTIGATION

1. A search of public records was made and no other survey was found.

2. The survey was conducted in accordance with the provisions of the Colorado Easement Act, C.R.S. 38-1-101 to 38-1-109.

3. The survey was conducted in accordance with the provisions of the Colorado Easement Act, C.R.S. 38-1-101 to 38-1-109.

4. The survey was conducted in accordance with the provisions of the Colorado Easement Act, C.R.S. 38-1-101 to 38-1-109.

5. The survey was conducted in accordance with the provisions of the Colorado Easement Act, C.R.S. 38-1-101 to 38-1-109.

6. The survey was conducted in accordance with the provisions of the Colorado Easement Act, C.R.S. 38-1-101 to 38-1-109.

7. The survey was conducted in accordance with the provisions of the Colorado Easement Act, C.R.S. 38-1-101 to 38-1-109.

8. The survey was conducted in accordance with the provisions of the Colorado Easement Act, C.R.S. 38-1-101 to 38-1-109.

9. The survey was conducted in accordance with the provisions of the Colorado Easement Act, C.R.S. 38-1-101 to 38-1-109.

10. The survey was conducted in accordance with the provisions of the Colorado Easement Act, C.R.S. 38-1-101 to 38-1-109.

Attest:

[Signature]
 Surveyor

Attest:

[Signature]
 County Clerk

MOELAN MINOR SUBDIVISION # 00-076
 WITHIN THE W 1/2 SW 1/4
 SEC. 09 T. 24S. R. 93W. 6TH P.M.
 DELTA COUNTY, COLORADO

VERSION 1 BY 10/20/2001

Attest:

[Signature]
 Surveyor

Attest:

[Signature]
 County Clerk

Attest:

[Signature]
 Surveyor

Attest:

[Signature]
 County Clerk

Attest:

[Signature]
 Surveyor

Attest:

[Signature]
 County Clerk

Attest:

[Signature]
 Surveyor

Attest:

[Signature]
 County Clerk

Attest:

[Signature]
 Surveyor

Attest:

[Signature]
 County Clerk