

IRRIGATION PLAN

HANSON HOMESTEAD ESTATES SUBDIVISION SUB18-009

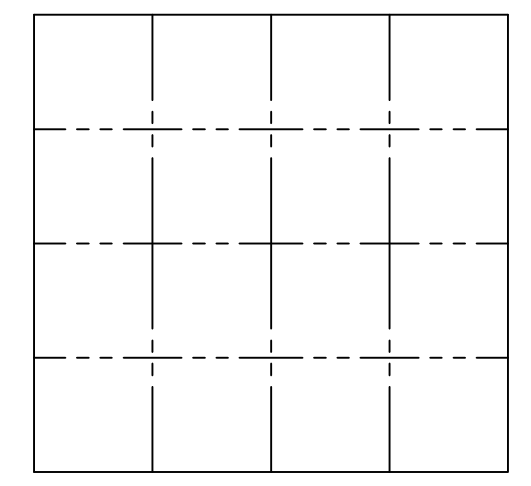
WITHIN THE NW1/4 SE1/4 OF SECTION 30, T.14S., R.92W., 6TH P.M.

DELTA COUNTY, COLORADO

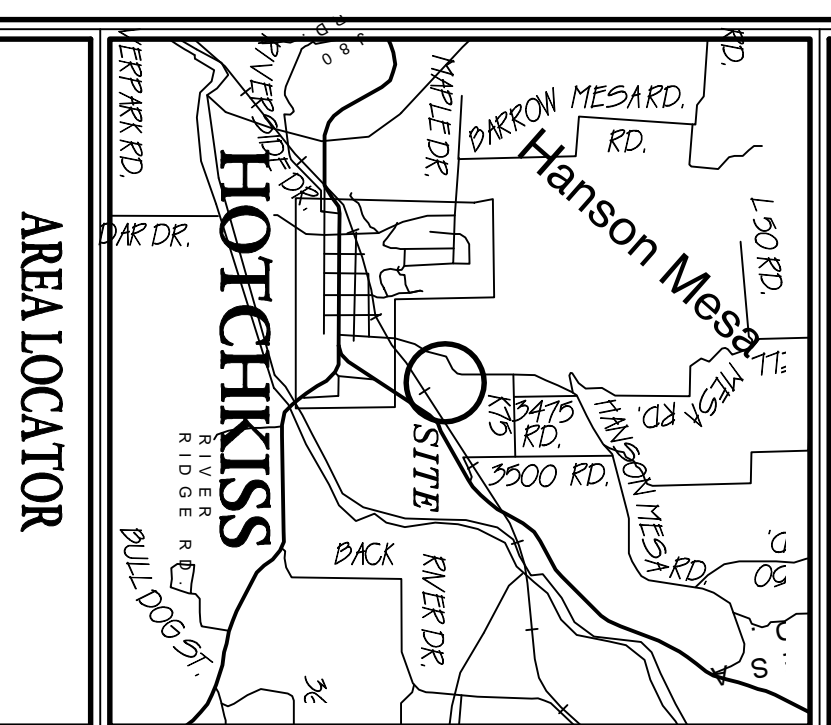
TOTAL ACRES
20.70 Acres

PLAT REFERENCES:
 PART OF BUCK CANYON ESTATES LAND SURVEY PART-
 RECORDED DECEMBER 5, 2008 UNDER RECESSION NO.
 610255
 2ND SURVEY PART OF BUCK CANYON RANCH,
 RECORDED SEPTEMBER 5, 2009 UNDER RECESSION
 NO. 537662

SEE PLAT



CONTROL MAP

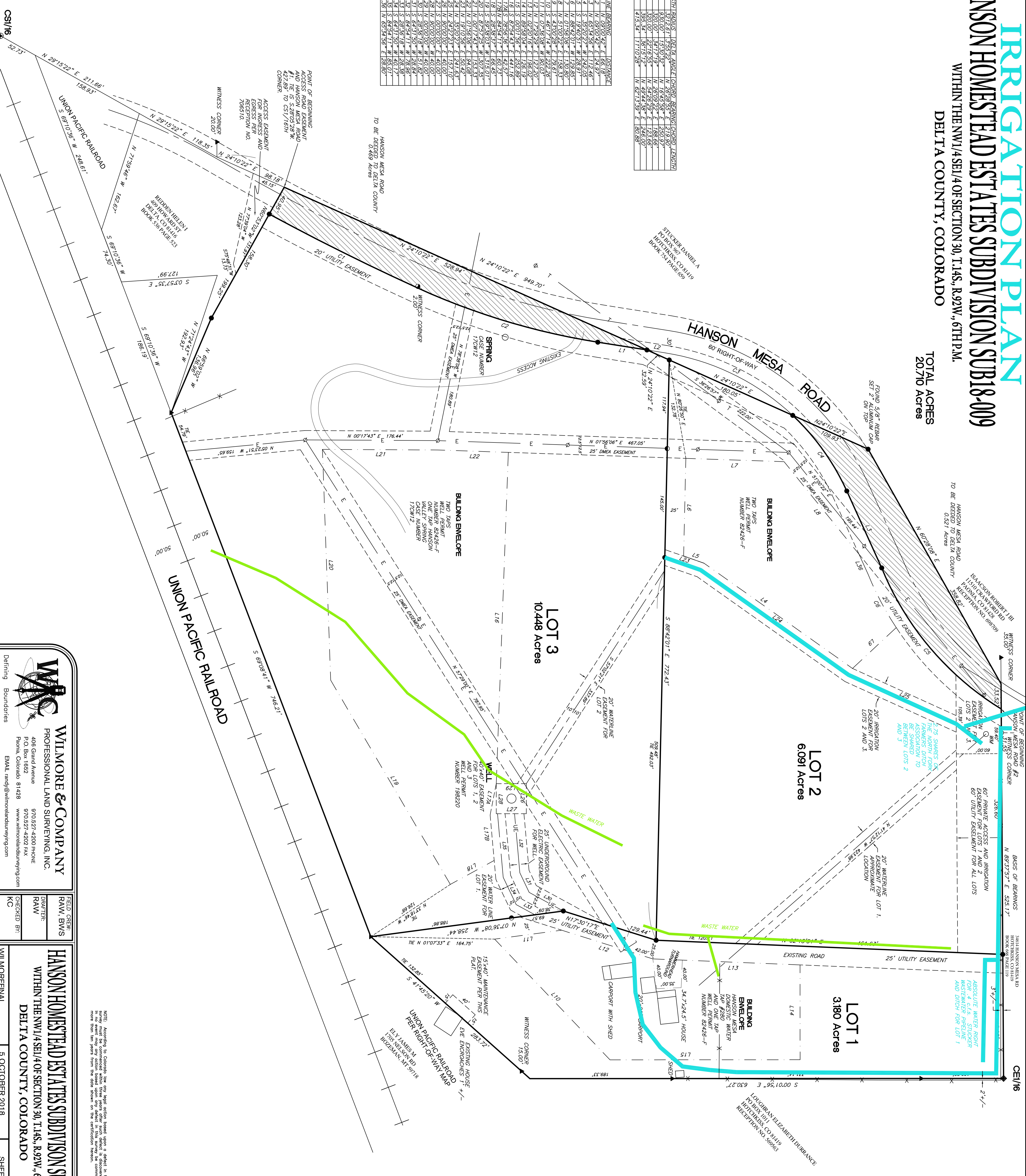


AREA LOCATOR

- TYPICAL LEGEND**
- ▲ Found 5/8" rebar with 1 1/2" aluminum cap
 PLS 24983 or as described.
 - ◆ Found 3/4" rebar with 2 1/2" aluminum cap
 PLS 20198
 - Found 3/4" rebar with 2 1/2" aluminum cap
 PLS 24983
 - Set 5/8" rebar 90° long with 2" aluminum cap
 PLS 24983
 - Set 3/4" rebar 90° long with 2" aluminum cap
 as Witness corner or inspection PLS 24983
- W/M Water Meter LOT 1
 - Fencelines
 - E Electric (overhead)
 - UE Electric (underground)
 - W Water line
 - E Easement
 - Previous Parcel Boundary
 - Setback line
 - Existing Road

BASIS OF BEARINGS:
 18937.57' E, FROM THE NE CORNER OF EAST PARCEL PER STUCKER LAND SURVEY PER RECESSION NO. 2002608 TO THE CE1/16 CORNER SEC. 30 GEODETIC NORTH GPS OBSERVATION
 SCALE 1" = 80' U.S. SURVEY FEET

LINE	BEARING	LENGTH	BEARING	LENGTH
L1	N 219.99° E	391.261	N 42.28° S	219.90
L2	N 09.00° E	42.46	N 24.10° E	102.83
L3	N 65.34° S	12.46	N 24.10° E	102.83
L4	S 50.20° S	12.46	N 24.10° E	102.83
L5	S 50.20° S	12.46	N 24.10° E	102.83
L6	N 68.42° E	129.85	N 24.10° E	102.83
L7	N 01.56° E	130.80	N 24.10° E	102.83
L8	S 43.00° S	128.31	N 24.10° E	102.83
L9	S 46.17° W	222.26	N 24.10° E	102.83
L10	S 46.17° W	222.26	N 24.10° E	102.83
L11	N 07.58° E	90.03	N 24.10° E	102.83
L12	N 07.58° E	90.03	N 24.10° E	102.83
L13	N 02.20° E	136.02	N 24.10° E	102.83
L14	N 88.58° E	126.19	N 24.10° E	102.83
L15	N 00.01° E	42.46	N 24.10° E	102.83
L16	N 88.58° E	126.19	N 24.10° E	102.83
L17	N 78.56° S	42.37	N 24.10° E	102.83
L18	N 84.54° S	60.73	N 24.10° E	102.83
L19	S 68.28° S	57.50	N 24.10° E	102.83
L20	S 87.57° S	507.35	N 24.10° E	102.83
L21	N 07.17° E	133.53	N 24.10° E	102.83
L22	N 07.17° E	133.53	N 24.10° E	102.83
L23	N 35.20° S	241.63	N 24.10° E	102.83
L24	N 35.20° S	241.63	N 24.10° E	102.83
L25	N 30.00° E	40.00	N 24.10° E	102.83
L26	N 30.00° E	40.00	N 24.10° E	102.83
L27	S 00.00° E	40.00	N 24.10° E	102.83
L28	N 19.10° S	56.27	N 24.10° E	102.83
L29	S 28.51° S	51.82	N 24.10° E	102.83
L30	S 64.31° S	28.84	N 24.10° E	102.83
L31	S 64.31° S	28.84	N 24.10° E	102.83
L32	S 64.31° S	28.84	N 24.10° E	102.83
L33	S 64.31° S	28.84	N 24.10° E	102.83
L34	S 64.31° S	28.84	N 24.10° E	102.83
L35	S 84.54° S	60.73	N 24.10° E	102.83
L36	N 65.34° S	12.46	N 24.10° E	102.83



WILMORE & COMPANY
 PROFESSIONAL LAND SURVEYING, INC.
 406 Grand Avenue
 P.O. Box 1852
 Fruita, Colorado 81428
 www.wilmorelandsurveying.com
 970.507.4200 PHONE
 970.507.4202 FAX
 EMAIL: rand@wilmorelandsurveying.com

FIELD CREW:	RAWV, BWS
DRAWN BY:	RAWV
CHECKED BY:	KC

HANSON HOMESTEAD ESTATES SUBDIVISION SUB18-009
 WITHIN THE NW1/4 SE1/4 OF SECTION 30, T.14S., R.92W., 6TH P.M.
 DELTA COUNTY, COLORADO
 5 OCTOBER 2018
 SHEET 1 OF 2

NOTE: According to Colorado law, any legal action based upon a plat in this survey may only be based upon any defect in this survey as shown on the plat from the date of the subdivision.