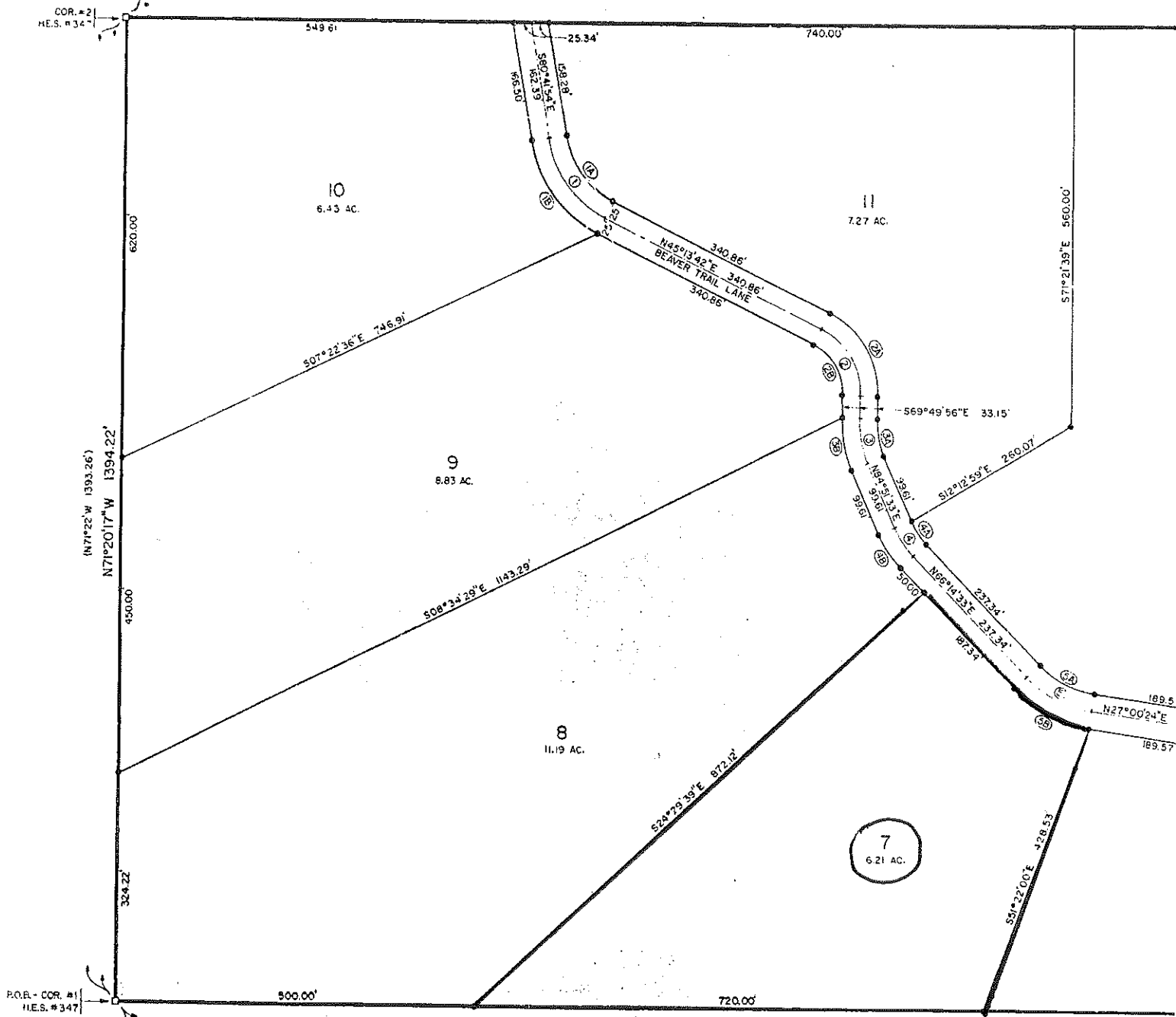




SCALE: 1" = 100'

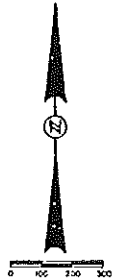
4-5



CURVE DATA					
#	RADIUS	Δ	LENGTH	TANGENT	CHORD
1	150.00	54°04'24"	141.56	76.55	136.37
1A	125.00	54°04'24"	117.97	63.79	113.64
1B	175.00	54°04'24"	165.16	89.31	159.10
2	100.00	64°56'22"	113.34	63.63	107.37
2A	125.00	64°56'22"	141.68	79.34	134.21
2B	75.00	64°56'22"	85.01	47.73	80.53
3	150.00	25°18'31"	66.26	33.68	45.72
3A	125.00	25°18'31"	55.22	28.07	34.77
3B	175.00	25°18'31"	77.30	39.29	46.67
4	150.00	18°37'00"	48.74	24.59	48.52
4A	125.00	18°37'00"	40.82	20.49	40.44
4B	175.00	18°37'00"	56.66	28.68	56.61
5	150.00	39°14'09"	102.72	53.47	100.72

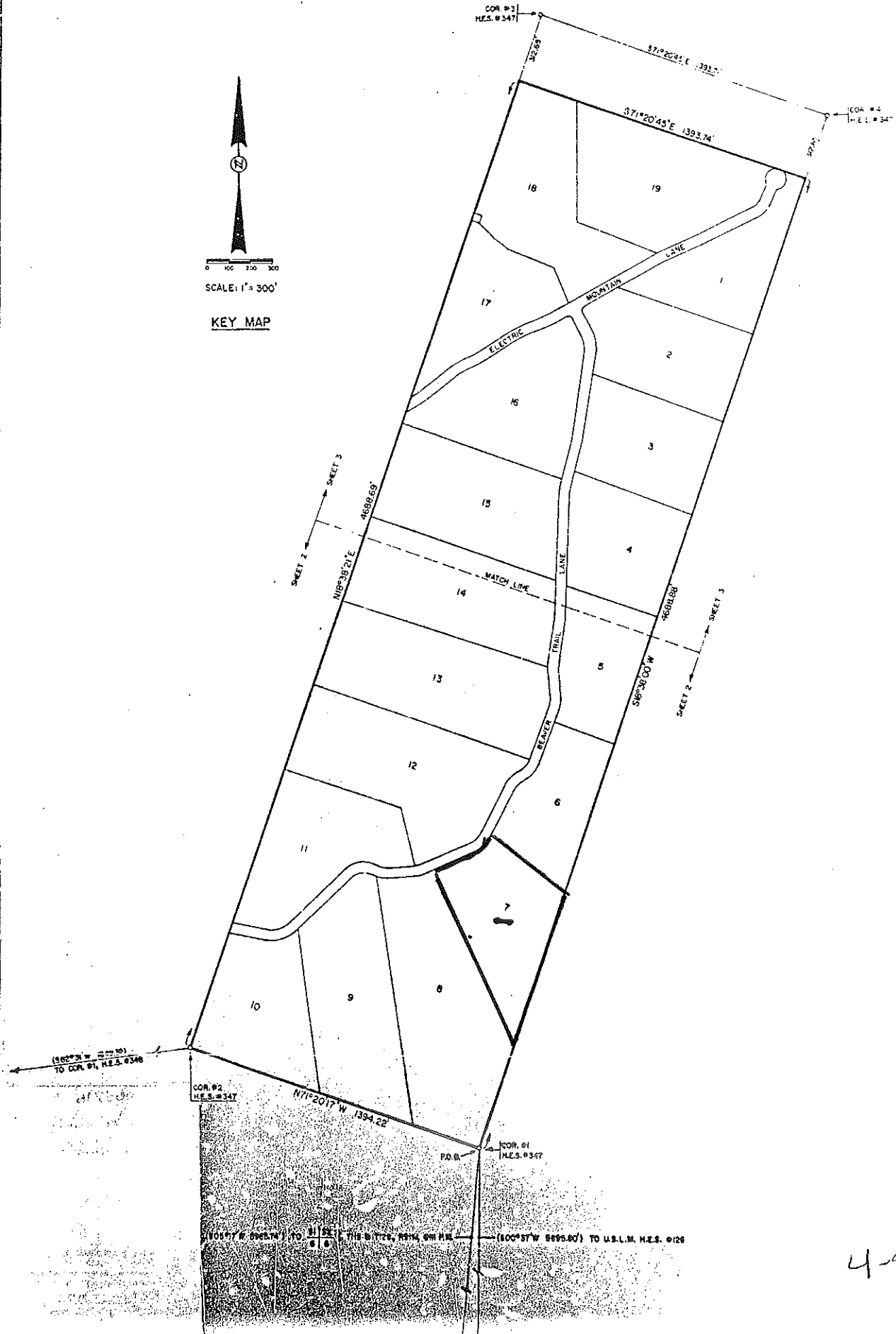
5A	125.00	39°14'09"	85.60	44.56	83.94
5B	175.00	39°14'09"	119.84	62.38	117.51
6	284.03	27°59'33"	129.00	65.81	127.72
6A	289.03	27°59'33"	141.21	72.04	139.81
6B	239.03	27°59'33"	116.78	59.58	115.62
7	150.00	35°17'53"	92.41	47.72	90.96
7A	125.00	35°17'53"	77.01	39.77	75.80
7B	175.00	35°17'53"	107.81	55.68	106.12
8	150.00	24°41'20"	64.64	32.83	64.14
8A	125.00	24°41'20"	53.86	27.36	53.45
8B	175.00	24°41'20"	75.41	38.30	74.83
9	150.00	11°56'59"	31.28	15.70	31.23
9A	175.00	11°56'59"	36.50	18.32	36.43
9B	125.00	11°56'59"	26.07	13.08	26.02
10	150.00	12°03'52"	31.59	15.85	31.53

10A	175.00	12°03'52"	36.6
10B	125.00	12°03'52"	26.1
11	150.00	06°05'14"	15.9
11A	125.00	06°05'14"	13.2
11B	175.00	06°05'14"	18.5
12	150.00	37°52'10"	99.1
12A	125.00	37°52'10"	82.1
12B	175.00	37°52'10"	115.6
13	20.00	90°00'00"	31.4
14	20.00	89°12'26"	31.1
15	524.77	12°29'20"	114.3
15A	499.77	09°31'10"	83.
15B	549.77	15°12'13"	145.
16	346.24	15°57'00"	96.
16A	371.24	15°57'00"	103.



SCALE: 1" = 300'

KEY MAP



4-5