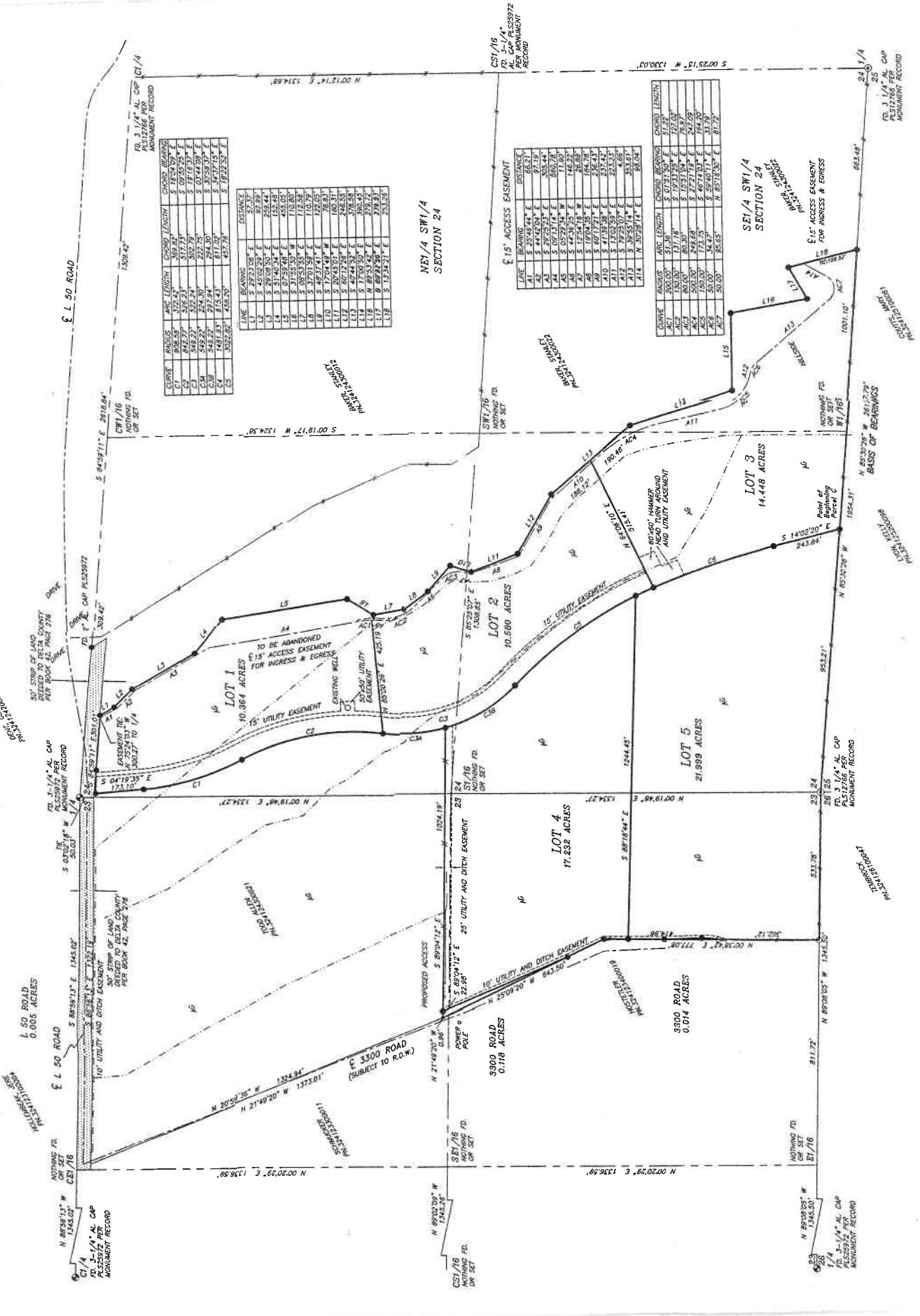


SKETCH PLAN BELLA VISTA ESTATES

PREPARED FOR ALLEN AND LOIS TODD
WITHIN THE 1/2 SECTION 24, T14S, R91W, 6TH PM, DELTA COUNTY, COLORADO



CURVE	RADIUS	ARC LENGTH	CHORD LENGTH	CHORD BEARING
C1	1000.50	172.42	169.87	S 18°52'52" E
C2	843.77	335.24	302.70	S 19°15'37" E
C3	542.25	284.30	222.75	S 01°44'09" E
C4	548.25	273.94	284.30	S 87°59'17" E
C5	1481.31	275.43	617.76	S 18°22'52" E
C6	3022.02	426.25	617.76	S 18°22'52" E

LINE	BEARING	DISTANCE
L1	S 89°02'05" W	91.29
L2	S 89°02'05" W	91.29
L3	S 29°08'50" E	258.44
L4	S 51°46'34" E	158.49
L5	S 17°53'45" W	110.80
L6	S 08°53'55" E	112.58
L7	S 37°01'58" E	110.79
L8	S 49°24'48" W	78.01
L9	S 49°24'48" W	78.01
L10	S 20°45'01" E	160.31
L11	S 60°17'28" E	246.55
L12	S 42°44'30" E	306.45
L13	S 42°44'30" E	306.45
L14	S 89°02'05" W	278.32
L15	S 89°02'05" W	278.32
L16	S 13°34'21" E	253.26

LINE	BEARING	DISTANCE	CURVE RADIUS	ARC LENGTH	CHORD BEARING	CHORD LENGTH
A1	S 44°42'04" E	97.19				
A2	S 27°22'53" E	305.44				
A3	S 09°31'14" W	311.80				
A4	S 44°38'25" E	146.22				
A5	S 12°54'18" W	26.69				
A6	S 18°52'52" E	236.43				
A7	S 18°52'52" E	236.43				
A8	S 41°33'58" E	237.42				
A9	S 13°02'59" E	222.57				
A10	S 41°33'58" E	237.42				
A11	S 13°02'59" E	222.57				
A12	S 72°55'04" E	35.61				
A13	S 72°55'04" E	35.61				
A14	N 10°28'14" E	84.04				

CURVE	RADIUS	ARC LENGTH	CHORD BEARING	CHORD LENGTH
C1	200.00	31.36	S 07°51'59" E	27.73
C2	300.00	46.33	S 12°51'59" E	40.97
C3	500.00	74.68	S 27°21'19" E	76.87
C4	150.00	17.17	S 46°17'03" E	16.19
C5	300.00	34.35	N 85°12'50" E	31.37
C6	300.00	34.35	N 85°12'50" E	31.37

CS1/16
FD. 3-1/4" AL CAP
PL328972
AL CAP PL328972
RECORD

CS1/16
FD. 3-1/4" AL CAP
PL328972
AL CAP PL328972
RECORD

CS1/16
FD. 3-1/4" AL CAP
PL328972
AL CAP PL328972
RECORD

CS1/16
FD. 3-1/4" AL CAP
PL328972
AL CAP PL328972
RECORD

CS1/16
FD. 3-1/4" AL CAP
PL328972
AL CAP PL328972
RECORD